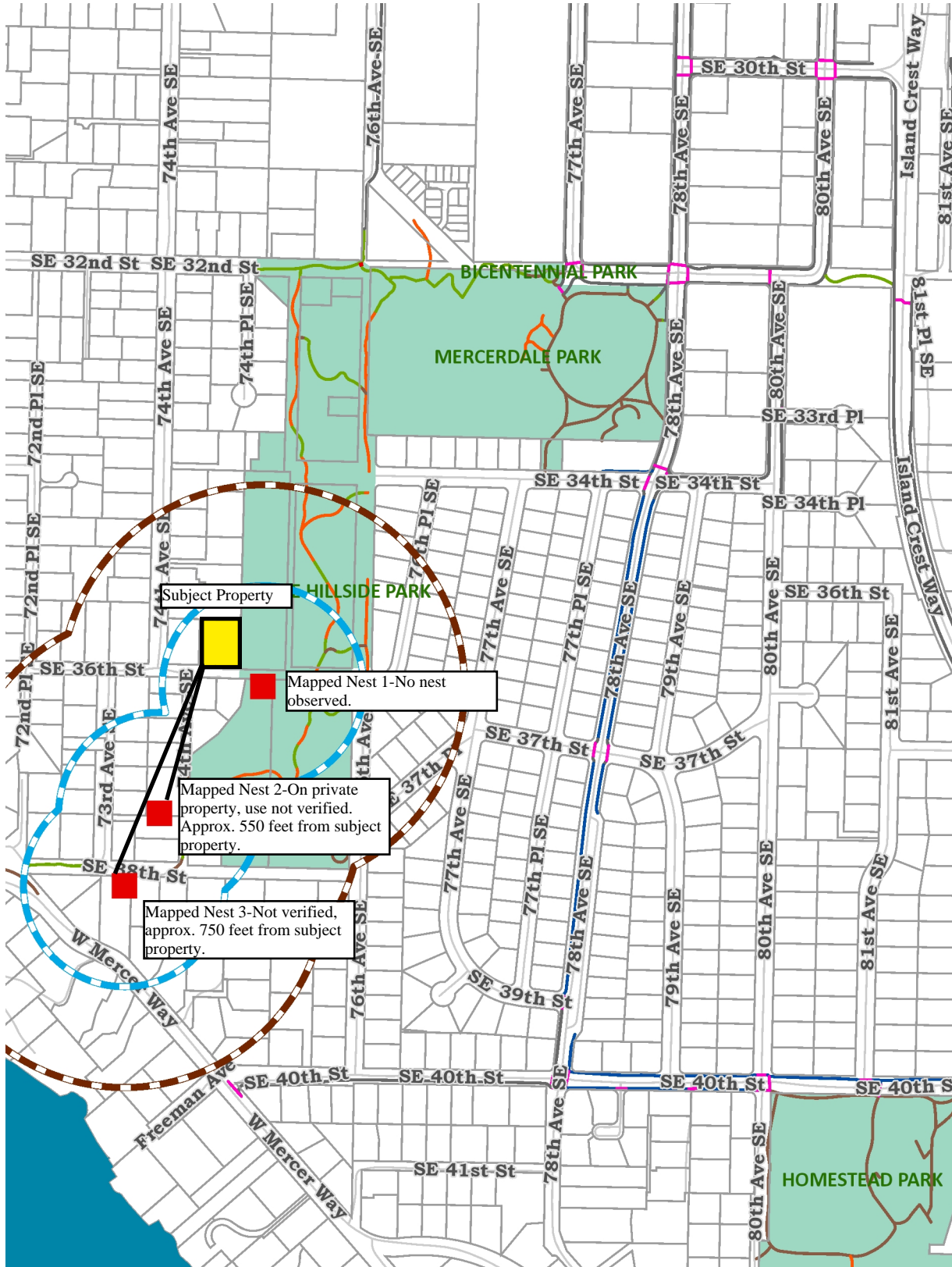


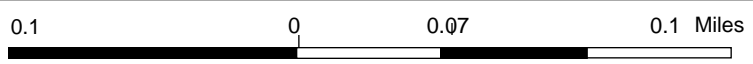
Mercerdale Park Eagle Nests Map 2



Legend

- King County Highway
- Water
- Eagle Nest
- Eagle Nest Buffers**
- 330 Ft
- 660 Ft
- 2ft Lidar Contours (2C)
- Parcel
- Trails**
- Boardwalk
- Bridge
- Crosswalk
- Path
- Sidewalk
- Stairs
- Trail
- Walkway
- Parks
- Street

1 : 5,886



Disclaimer: These maps were developed by the City of Mercer Island and are intended to be a general purpose digital reference tool. These maps are not an accepted legal instrument for describing, establishing, recording or maintaining descriptions for property concerns or boundaries. The City makes no representation or warranty with respect to the accuracy or currency of these data sets, especially in regard to labeling of surveyed dimensions, or agreement with official sources such as records of survey, or mapped locations of features.

Notes
 Ecological Land Services, Inc.
 March 1, 2019

CITY OF MERCER ISLAND

DEVELOPMENT SERVICES GROUP

9611 SE 36TH STREET | MERCER ISLAND, WA 98040

PHONE: 206.275.7605 | www.mercergov.org



TREE INVENTORY & REPLACEMENT SUBMITTAL INFORMATION

EXCEPTIONAL TREES

Exceptional Trees- means a tree or group of trees that because of its unique historical, ecological or aesthetic value constitutes an important community resource. A tree that is rare or exceptional by virtue of its size, species, condition, cultural/historical importance, age, and/or contribution as part of a tree grove. Trees with a diameter of more than 36 inches, or with a diameter that is equal to or greater than the diameter listed in the Exceptional Tree Table shown in MICC 19.16 under Tree, Exceptional.

List the total number of trees for each category and the tree identification numbers from the arborist report.

Number of trees 36" or greater _____

List tree numbers: _____

Number of trees 24" or greater (including 36" or greater) _____

List tree numbers: _____

Number of trees from Exceptional Tree Table (MICC 19.16) _____

List tree numbers: _____

LARGE REGULATED TREES

Large Regulated Trees- means any tree with a diameter of 10 inches or more, and any tree that meets the definition of an Exceptional Tree.

Number of Large Regulated Trees on site _____ (A)

List tree numbers: _____

Number of Large Regulated Trees on site proposed for removal _____ (B)

List tree numbers: _____

Percentage of trees to be retained $((A-B)/Ax100)$ note: must be at least 30% _____ %

RIGHT OF WAY TREES

Right of Way Trees- means a tree that is located in the street right of way adjacent to the project property.

Number of Large Regulated Trees in right of way _____

List tree numbers: _____

Number of Large Regulated Trees in right of way proposed for removal _____

List tree numbers: _____

Reason for removal: _____

TREE REPLACEMENT

Tree replacement- removed trees must be replaced based on the ratio in the table below. Replacement trees shall be conifers at least six feet tall and or deciduous at least one and one-half inches in diameter at base.

Diameter of Removed Tree (measured 4.5' above ground)	Tree replacement Ratio	Number of Trees Proposed for Removal	Number of Tree Required for Replacement Based on Size/Type
Less than 10"	1		
10" up to 24"	2		
Greater than 24" up to 36"	3		
Greater than 36" and any Exceptional Tree	6		
TOTAL TREE REPLACEMENTS			